



FOR SALE

SUPER PRIVATE 1HA LAND - NOTHING LEFT TO DO - JUST MOVE IN !

HOUSE :

Low-set split level Home with 5 steps to the lower level

Lower Level: Huge eat in kitchen, new appliances – Gas Cooktop / electric oven, new cabinets, air conditioned, dishwasher, large pantry.

Renovated Laundry with elevated appliances that include under appliance pull out shelf for easy wash loading and unloading, no need to bend down, large drawers for all linen.

Separate toilet

Easy access to this level via 2 sliding glass doors – concrete paths directly from the Undercover car accommodation

Next Level:

4 Bedrooms – 2 master size with sliding glass doors to their own private verandah and access to the Spa and Swim Spa pool, both are airconditioned and have ceiling fans, new flooring, large built-in robes, security screens.

Other 2 Bedrooms have built in robes, ceiling fans and security screens.

Fully renovated Bathroom with Barn Door, floating double vanity, super mirrored cabinets with inbuilt power points, Heat lamp/ lights and a ceiling fan, security screens, large Over size walk in shower with single glass panel, toilet.

Lounge – Large central lounge room with tiled flooring, new downlighting, large sliding screen door to the 3m wide front wrap around verandah

Outside: Great Bore – run 4 sprinklers at a time keeping the gardens looking fantastic, lots of separate garden zones with drip irrigation. Green dome garden grow house also with storage area for pots / fertilizer's / tools etc all in one place. Has a fogger system for Hot summers too. Three raised beds inside the dome, 4 raised beds outside making the whole garden easy to grow seasonal veg.

Massive very impressive chook yard – or dog yard with 2 hen houses one is double story giving lots of fun and shade for the Hens

Another yard – Dog Proof with small steel shelter

Established Gardens with loads of Native trees to attract bees and birds – all easy care with pathways and lovely private sitting areas. Dedicated fire Pit area just perfect for winter nights with friends

4 BED | 1 BATH | 8 CAR

PRICE:

AUCTION ON SITE 12:00 pm

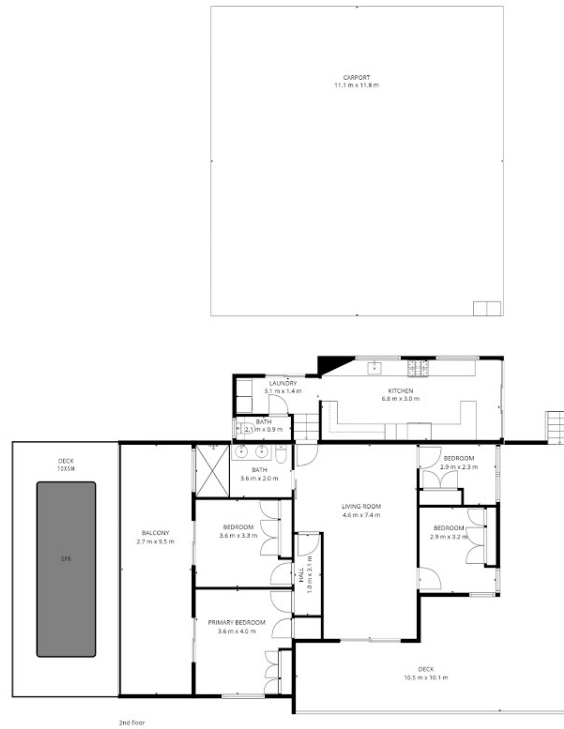
OPEN FOR INSPECTION:

N/A



Lyn Sills
0402500825

lynsills@atrealty.com.au
eskrealestate.com.au



Artist Impression Only : While every attempt has been made to ensure the accuracy of this floor plan's areas and measurements of doors, windows, rooms and all other items are approximate and no responsibility is taken for any error, omission, or mis-statement. This plan is for illustration purposes only and should only be used as such by any prospective purchaser.
 Floor Plan By www.twobearstudios.com



Disclaimer: Please note this floor plan is for marketing purposes and is to be used as a guide only. All dimensions are estimates only and may not be exact measurements.