



FOR SALE

CHARACTER CREEKSIDE COTTAGE

Tucked away at the end of a peaceful cul-de-sac, this charming two-level chalet-style cottage offers warmth, tranquillity and character right in the heart of the mountain. Surrounded by lush rainforest, and completely private, yet close to Gallery Walk cafes and shops, this unique home provides the perfect mountain retreat.

The inviting indoor-outdoor living spaces connect beautifully with the outdoor surroundings and encourage relaxation, whether you're enjoying your morning coffee on the balcony or unwinding with a glass of wine while listening to the gentle sounds of the nearby running stream..

Indoor features include;

- * Three bedrooms and two bathrooms
- * Cathedral style ceilings with exposed timber beams
- * Well-appointed kitchen including induction cooktop and marble island benchtop and splashback
- * Open-plan living and dining area with a cosy combustion fireplace
- * Private master retreat upstairs complete with ensuite and its own sitting room
- * Reverse cycle air-conditioning
- * Thoughtfully updated throughout, with scope for further enhancements or expansion
- * North facing verandah

Outdoor features include;

- * Completely private rainforest setting overlooking a picturesque running creek
- * New merbau timber balcony, perfect for entertaining or relaxing amongst nature
- * Under-house area offering storage or potential to create a studio, workshop or additional living space (STCA)
- * Adjacent flat land for kids, pets or use as a vegetable garden
- * Seperate 2 car lock up garage
- * Convenient Eagle Heights location, minutes to local cafés, shops, and approximately 13 minutes to Coomera

Unique mountain cottages of this kind are hard to come by.. Don't miss your chance to secure your own secluded rainforest sanctuary. Join us at the next Open Home or contact Trish today to arrange your private inspection.

3 BED | 2 BATH | 2 CAR

PRICE:

Price Guide \$1,155,000

OPEN FOR INSPECTION:

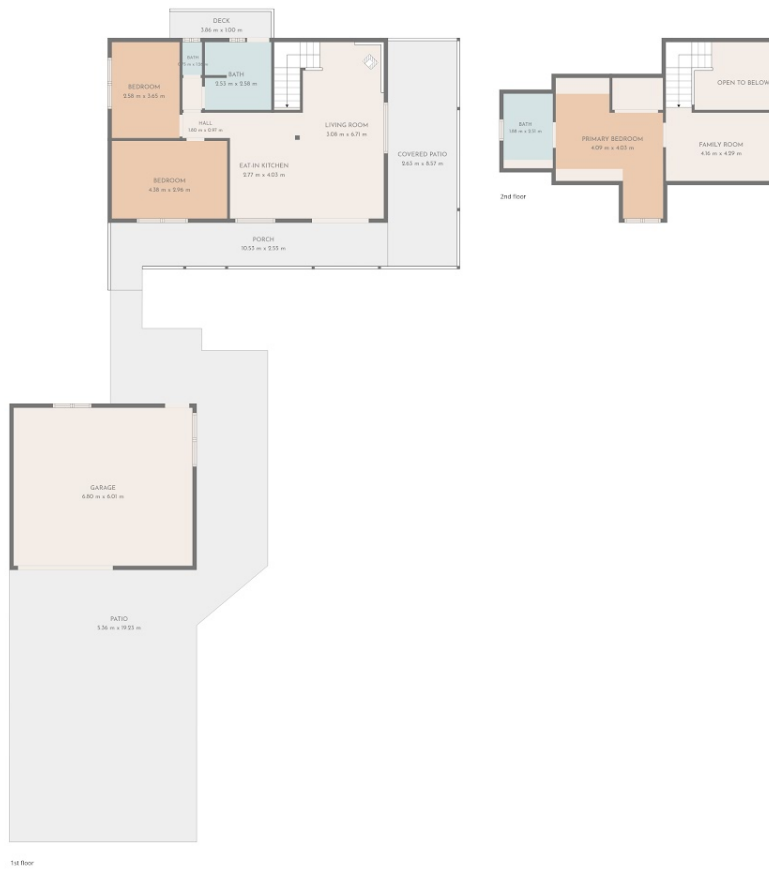
Jul 11 at 10:00am - 10:30am



Trish Scott
0427518650

trish.scott@atrealty.com.au

www.atrealty.com.au



TOTAL: 105 m2

1st floor: 69 m2, 2nd floor: 36 m2

EXCLUDED AREAS: GARAGE: 41 m2, DECK: 4 m2, COVERED PATIO: 23 m2,
 PATIO: 110 m2, PORCH: 19 m2, LOW CEILING: 5 m2,
 OPEN TO BELOW: 5 m2, WALLS: 16 m2

FLOOR PLAN CREATED BY CUBICASA APP. MEASUREMENTS DEEMED HIGHLY RELIABLE BUT NOT GUARANTEED.

Disclaimer: Please note this floor plan is for marketing purposes and is to be used as a guide only. All dimensions are estimates only and may not be exact measurements.