

ADDRESS UPON REQUEST



FOR SALE

RESORT LIVING IN THE HEART OF BROADBEACH

Located in one of Broadbeach's most tightly held buildings, this two-bedroom apartment offers the perfect combination of space, convenience and lifestyle.

Set on a rare 10,000sqm landholding, Belle Maison is renowned for its beautiful gardens and resident facilities, including a fully equipped gymnasium, two full-size tennis courts, a 30-metre heated swimming pool, indoor and outdoor spas, saunas, residents' lounge and BBQ areas.

This beautifully presented fully furnished north-east facing apartment features a spacious practical open plan layout that flows onto a private balcony overlooking the extensive manicured gardens. Offering generous proportions throughout, the apartment includes two large bedrooms, a spacious bathroom, walk-in robe to the master bedroom, separate full-size laundry and excellent storage.

Property Features:-

- Fully furnished and ready to enjoy
- North-east aspect
- Open-plan living and dining area
- Well-appointed galley kitchen with ample storage and bench space
- Two spacious bedrooms with good natural light
- Master bedroom with walk-in robe
- Large bathroom
- Separate laundry
- Air-conditioning
- Secure basement car space plus storage cage
- Private outlook over the gardens
- Secure building with onsite management

Belle Maison Facilities:-

- Set across 10,000sqm of landscaped manicured grounds, residents enjoy access to:
- 30-metre heated resort style swimming pool

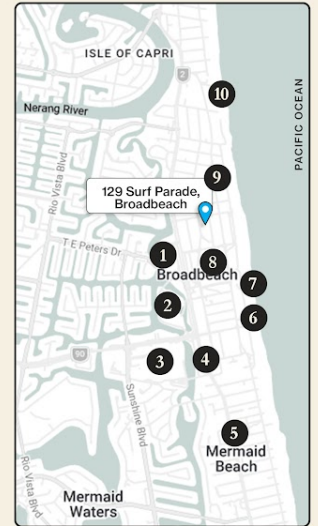
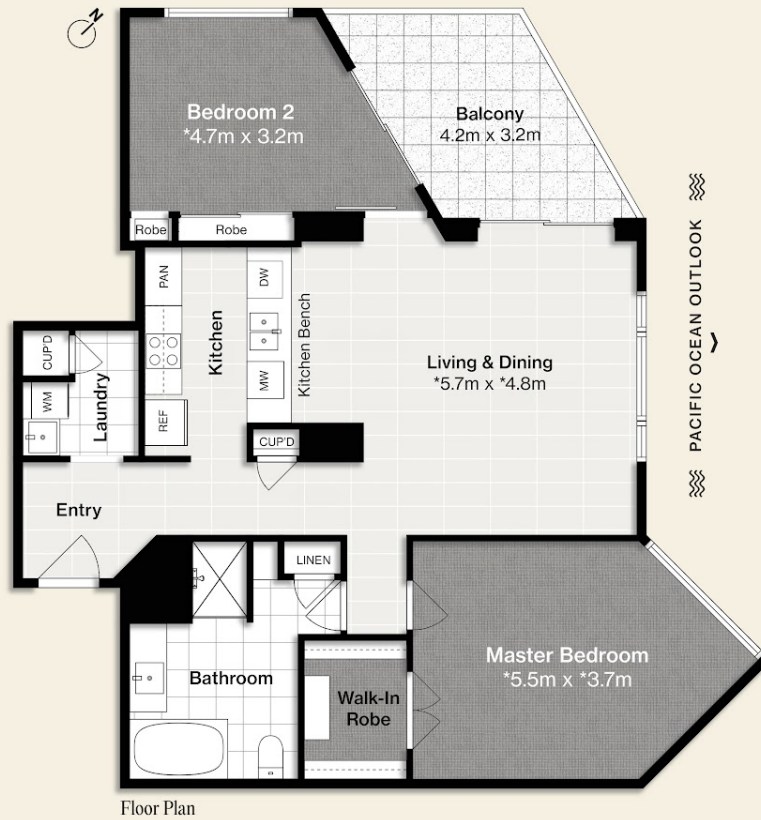
2 BED | 1 BATH | 1 CAR

PRICE:
OFFERS OVER \$1,150,000

OPEN FOR INSPECTION:
N/A



Janet Harris
0404482240
janetharris@atrealty.com.au
www.atrealty.com.au



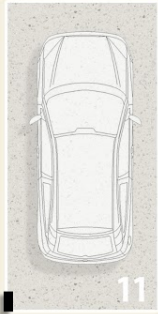
Location Map
Map Legend :

1. Gold Coast Convention and Exhibition Centre
2. The Star Gold Coast
3. Pacific Fair Shopping Centre
4. G-Link Light Rail Station
5. Mermaid Beach Restaurants & Cafes
6. Kurrawa Beach
7. Pratten Park
8. The Oasis Shopping Centre
9. Broadbeach Park
10. The Langham Gold Coast

Storage Cage
(Approx. 1.7m x 1.4m)



Parking Bay
(Approx. 2.4m x 5.4m)



(Not Shown in Position)

Basement Car Space & Storage

Floor Plan

@realty
JANET HARRIS 0404 482 240

'Belle Maison'
12/129 Surf Parade
Broadbeach

Internal 104m²
Balcony 11m²
Total 115m²
Car Space & Storage 16m²

2 Bed
1 Bath
1 Car

Disclaimer

This floor plan is a detailed representation created to enhance your understanding of the property's potential. While we strive for accuracy, dimensions are approximate and should be verified for complete assurance. * Denotes measurements taken at the widest points.

BIANCO
STUDIO

Disclaimer: Please note this floor plan is for marketing purposes and is to be used as a guide only. All dimensions are estimates only and may not be exact measurements.

Janet Harris
0404482240
janetharris@atrealty.com.au
www.atrealty.com.au

@realty