



## FOR SALE

### MOVE-IN READY FAMILY HOME ON A SPACIOUS BLOCK

Freshly updated, beautifully presented and ready for its new owners, this spacious family home offers the perfect opportunity to move straight in and start enjoying everything it has to offer. Set on a generous 783m<sup>2</sup> fully fenced block in a quiet, family-friendly street, this contemporary residence combines modern comfort, practical living and low-maintenance appeal. With fresh paint throughout, brand-new carpet in all bedrooms and a new glass cooktop, all the hard work has been done.

#### Property Features:

- 4 spacious bedrooms with brand-new carpet
- Master bedroom with walk-in robe, ensuite and air conditioning
- Open-plan kitchen, dining and living area
- Separate media room
- Freshly painted throughout
- New glass cooktop
- Split-system air conditioning in the living area, master bedroom and 2nd bedroom
- Spacious family bathroom, separate toilet.
- Generous laundry
- Double lock-up garage with internal access
- Expansive covered outdoor entertaining area
- Fully fenced backyard
- Vacant and ready for immediate possession

Positioned within one of Gympie's popular residential precincts, this home enjoys easy access to schools, sporting facilities, shopping centres, medical services and the vibrant Gympie CBD. As the gateway to the Fraser Coast and only a comfortable drive to the Sunshine Coast, Gympie continues to attract families, professionals and investors seeking an affordable lifestyle with excellent infrastructure, rail connections and future growth potential.

Whether you're looking for a place to call home or a smart addition to your

4 BED | 2 BATH | 2 CAR

PRICE:  
\$800,000

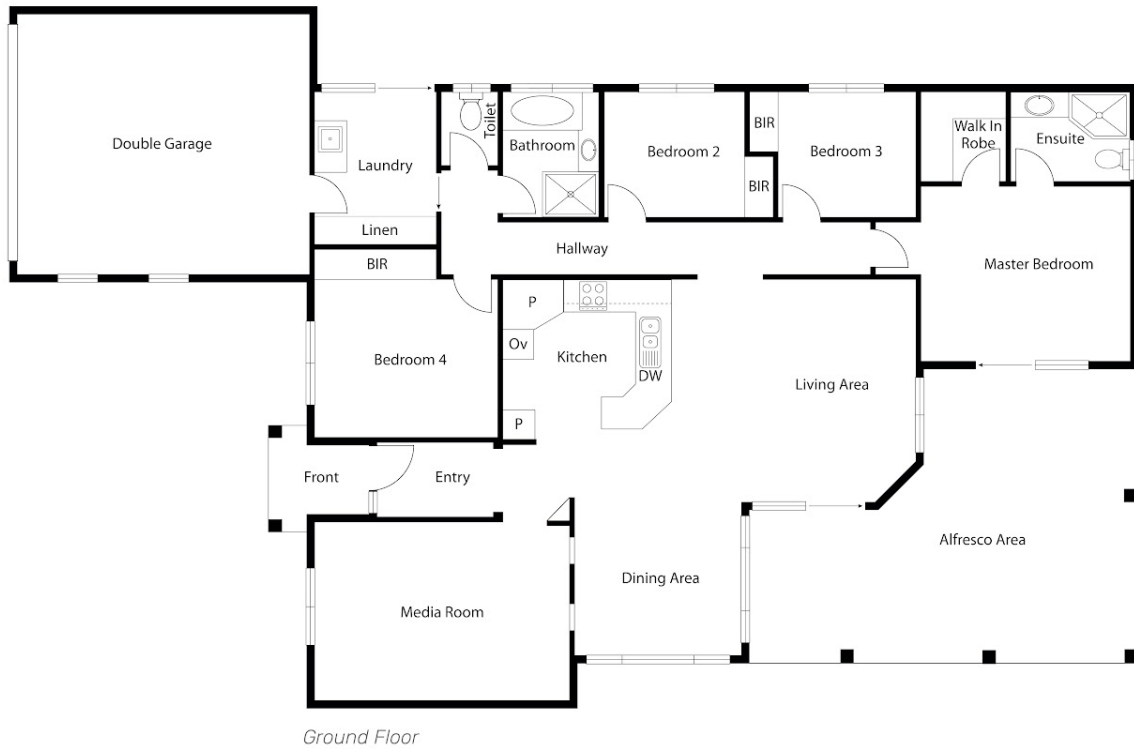
OPEN FOR INSPECTION:  
Jun 27 at 9:30am - 10:00am



**Kaylene Farnham**  
0431308779

kaylenefarnham@atrealty.com.au

[www.wesandkaylenefarnhamrealestate](http://www.wesandkaylenefarnhamrealestate)



30 Fairway Drive  
Gympie

Floor plan is provided as indicative layout only. Measurements are not available, floor plan is not to scale. No guarantees provided on accuracy. Exterior elements are not in position



Disclaimer: Please note this floor plan is for marketing purposes and is to be used as a guide only. All dimensions are estimates only and may not be exact measurements.