

# FOR SALE

## CONTEMPORARY FAMILY LIVING IN A WALK-TO- EVERYTHING LOCATION

Perfectly designed for modern family living, this beautifully appointed contemporary home combines stylish finishes, practical design, and an unbeatable location. Offering spacious open-plan living, low-maintenance outdoor spaces, and everyday convenience, this is an outstanding opportunity for families, first-home buyers, or investors alike.

Step inside to discover a light-filled interior featuring ducted air conditioning and ceiling fans throughout for year-round comfort. The well-designed floorplan offers four generous bedrooms, all complete with built-in wardrobes, while the master suite enjoys the luxury of a walk-in robe and private ensuite.

The heart of the home is the modern kitchen, showcasing an island bench, quality finishes, and a spacious butler's pantry that also incorporates the laundry. Overlooking the open-plan family and dining area, the kitchen flows seamlessly through to the covered alfresco, creating the perfect setting for entertaining.

Outside, you'll love the low-maintenance backyard complete with a fantastic outdoor kitchen - ideal for weekend barbecues and gatherings with family and friends.

### Property Features:

- Four spacious bedrooms with built-in wardrobes
- Master bedroom with walk-in robe and ensuite
- Modern kitchen with island bench
- Butler's pantry combined with laundry
- Open-plan family and dining area
- Separate lounge room
- Covered alfresco entertaining area
- Outdoor kitchen
- Low-maintenance backyard
- Ducted air conditioning
- Ceiling fans throughout
- Single lock-up garage

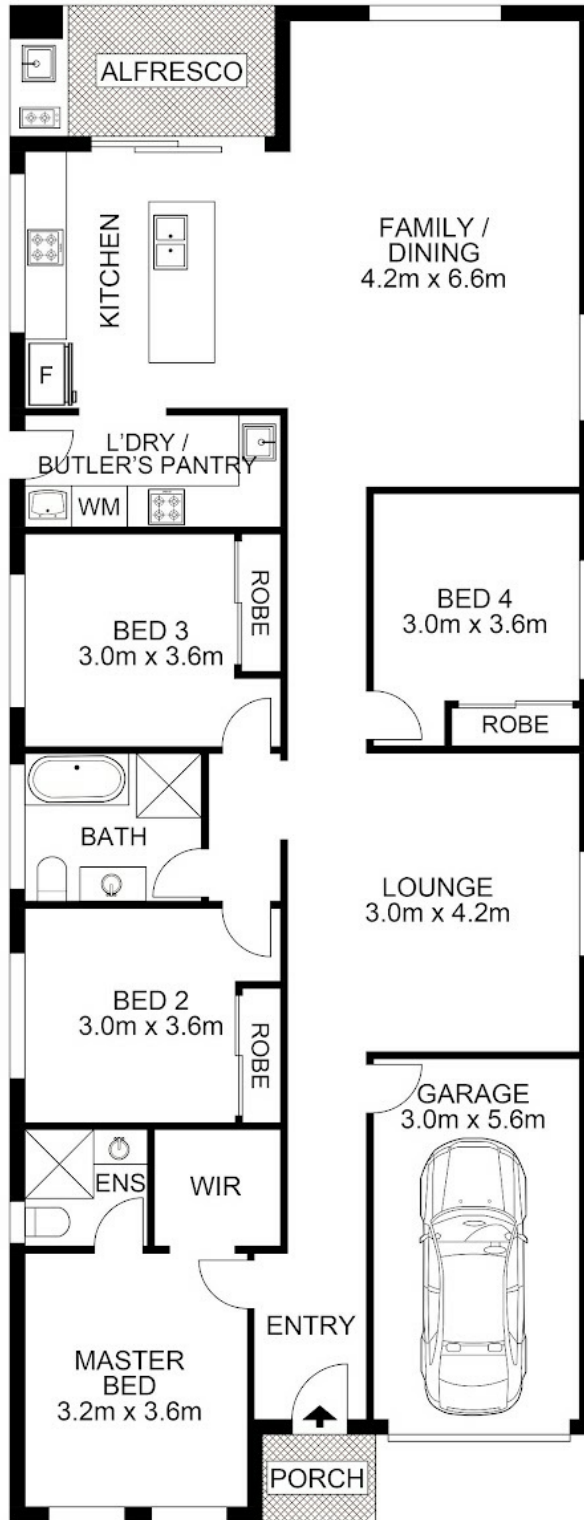
4 BED | 2 BATH | 1 CAR

PRICE:  
Just Listed

OPEN FOR INSPECTION:  
N/A



**Huss Al Salemi**  
**0411699419**  
huss@atrealty.com.au  
[www.agencycentral.com.au](http://www.agencycentral.com.au)



 AGENCY

Disclaimer: Please note this floor plan is for marketing purposes and is to be used as a guide only. All dimensions are estimates only and may not be exact measurements.

5 Violenta Way, Rosemeadow

Huss Al Salemi • All measurements are approximate • Drawn for marketing purposes only

0411699419

huss@atrealty.com.au

[www.agencycentral.com.au](http://www.agencycentral.com.au)

