



SOLD

MORAYFIELD, 3 BEDROOM ON 644SQM

Peter Pretorius is proud to present your 3 Bedroom home with drive-thru access to the big back yard, within 500 meters of Morayfield Shopping Centre and 500 meters to a local State School and Pre-School facility. Morayfield Train Station, the local sports club and doctors are not much further away either.

This tidy, neat, lowset brick and tile home is complimented by three bedrooms with built-in cupboard space and soft carpets. The Master bedroom has a small but functional wall air-conditioner mounted for those hot summer days in Queensland.

Sparkling white ceramic tiles feature a modern kitchen, dining and lounge, the lounge which is also fitted with a wall air-conditioner. Plenty a cupboard space in the kitchen and a large window to the patio area makes this a functional, modern and delightful kitchen to cook from.

Your internal laundry is complimented by a huge basin, cupboard space and a direct access door onto the rear patio to the wall mounted, easy to reach washing line.

Your full length covered rear patio provides an excellent space for your afternoon barbeque or early morning breakfast whilst your children are playing undisturbed in your large back yard or whilst you simply enjoy the sight and sounds of nature.

Your large fully fenced back yard, with garden locker and drive thru access could provide a parking space for the fishing boat or camper trailer.

Make the benefit of a cul-de-sac, central location and most affordable living yours today – contact Peter for an immediate inspection.

3 BED | 1 BATH | 0 CAR

PRICE:
\$260,000

OPEN FOR INSPECTION:
N/A



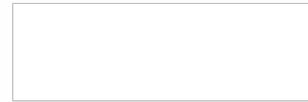
Peter Pretorius
0413484963
peterp@atrealty.com.au
www.atrealty.com.au

Every effort is made to ensure accuracy
All measurements, positioning and fixings are approximate. Measurements in metres.

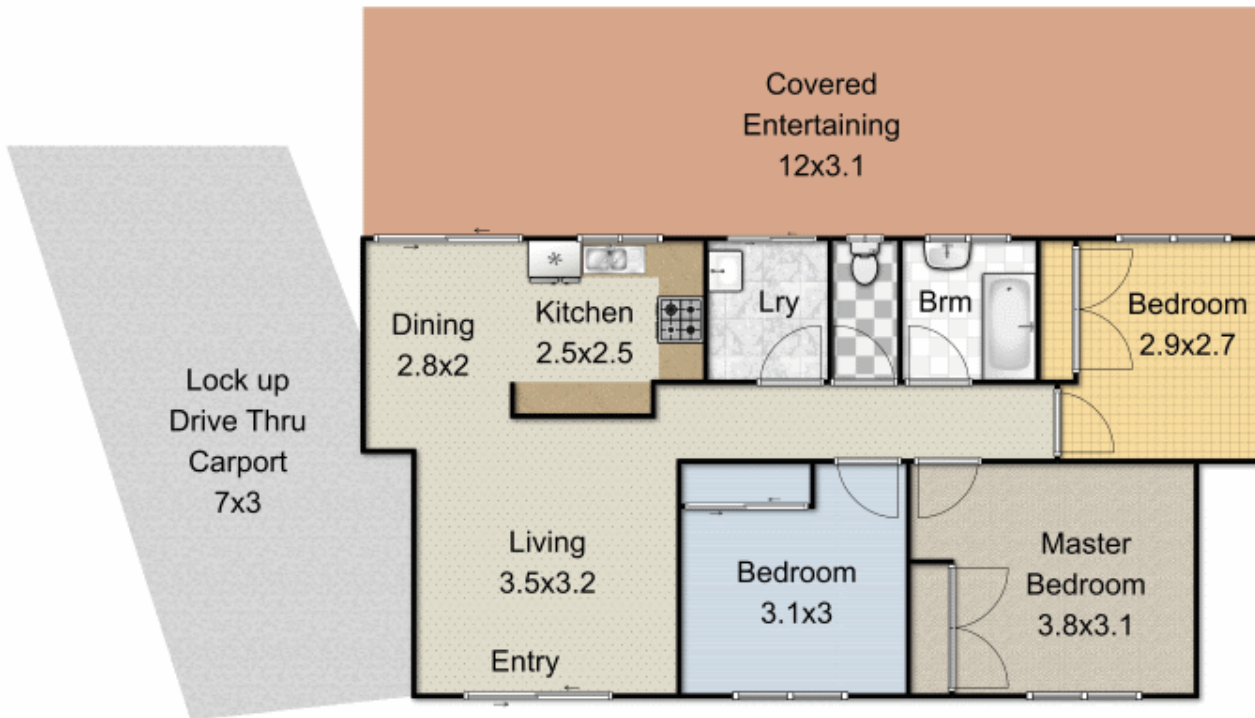
Approx Sqm

Int - 70 sqm

Ext - 65 sqm



Garden
Shed



Disclaimer: Please note this floor plan is for marketing purposes and is to be used as a guide only. All dimensions are estimates only and may not be exact measurements.