



FOR SALE

BEACHSIDE PARADISE-EXCEPTIONAL VALUE WELL BELOW REPLACEMENT COST-BUYERS OVER \$650,000

The Ultimate Sea Change – One of the Best Value Beachside Homes on Australia's East Coast

Imagine waking each morning to the sound of the ocean, enjoying sea breezes from your balcony, launching the boat just minutes away, and ending the day with spectacular sunsets in one of Far North Queensland's best-kept secrets.

Positioned just steps from the pristine sands of Cowley Beach, this architecturally designed and master-built home offers an enviable coastal lifestyle at a price well below replacement cost. Whether you're retiring,

relocating, investing or simply chasing a better lifestyle, opportunities like this are becoming increasingly rare.

Surrounded by natural beauty, you'll enjoy views towards the Barnard Islands, regular turtle nesting seasons, exceptional fishing, boating and easy access to the Great Barrier Reef—all while living in one of the friendliest coastal communities in Queensland.

Lifestyle You'll Love

Direct access to kilometres of quiet, uncrowded beachfront

Excellent fishing and boating with nearby boat ramp

Great Barrier Reef at your doorstep

Views to the Barnard and Dunk Islands

Rainforest, beaches and national parks nearby

Strong community spirit with regular events at the local community hall

No rear neighbours for added privacy

Just 20 minutes to Innisfail and approximately 30 minutes to Mission Beach

The Home

Set on a fully fenced 607m² allotment, this immaculately maintained highset residence has been freshly painted and offers generous living spaces designed for tropical living.

Upstairs

Three spacious bedrooms

Large master suite with walk-in robe and private balcony

3 BED | 2 BATH | 6 CAR

PRICE:

Beachside Paradise – Exceptional Value

OPEN FOR INSPECTION:

N/A



Jean Laterre

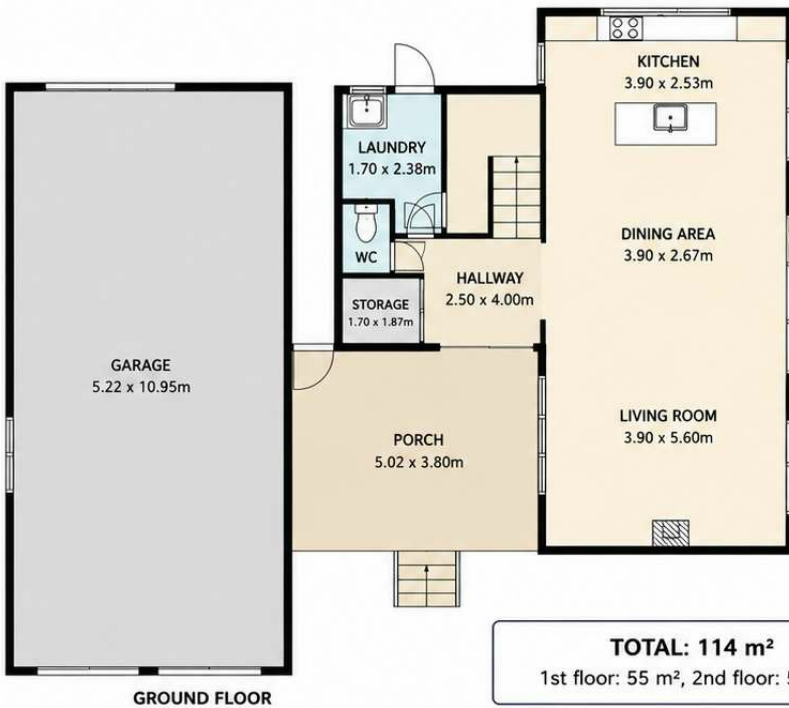
0437696969

jean.ccr@atrealty.com.au

www.atrealty.com.au

30 INARLINGA ROAD

FLOOR PLAN & SUMMARY



TOTAL: 114 m²
1st floor: 55 m², 2nd floor: 59 m²

PROPERTY SUMMARY

GROUND FLOOR

- Welcoming front entry and porch
- Open-plan living and dining area
- Modern kitchen with island bench
- Internal staircase with feature landing
- Laundry with separate toilet
- Large lock-up garage/workshop with internal access

UPPER FLOOR

- Three bedrooms
- Primary bedroom with walk-in robe
- Family bathroom with separate bath and shower
- Central hallway providing access to all bedrooms

PROPERTY HIGHLIGHTS

- 3 Bedrooms
- 1 Bathroom + Separate Downstairs Toilet
- Open Plan Living
- Modern Kitchen
- Internal Staircase
- Walk-in Robe to Main Bedroom
- Large Garage/Workshop
- Front Porch
- 607 m² Block with Front & Rear Access

NOTES: IMAGE IS FOR DEMONSTRATIVE PURPOSES ONLY - THERE ARE 4 ENTERTAINMENT AREAS, NOT ALL INCLUDED IN PLAN FOR CLARITY AND SIMPLICITY.

Floor plan is for illustrative purposes only. Measurements are approximate.

Disclaimer: Please note this floor plan is for marketing purposes and is to be used as a guide only. All dimensions are estimates only and may not be exact measurements.