



**SOLD**

## BEAUTIFUL BELLBOWRIE

Calling all Investors, 1st home buyers, retirees or growing families wishing to upgrade. This low maintenance 4 bedroom family home set in a quiet cul-de-sac yet close to public amenities will not be on the market for long.

The large open plan dining, living, kitchen area flows seamlessly out to the back covered outdoor entertaining area.

With high livability this conveniently located property is perfect for the first home buyer, young family, retiring couple or investor wishing to add to his/her portfolio.

Benefits include:

- Set in a family-friendly quiet cul-de-sac
- In the much sought after school catchment of Kenmore State High School
- Minutes to Moggill State School
- Just over 30 minutes to Brisbane CBD
- 450m walk to Bellbowrie Shopping Plaza
- 520m walk to Brisbane City Council Bus services
- Less than 2 hours to the beautiful beaches of the Sunshine Coast and 90 minutes to the Gold Coast
- Solid brick and extremely low maintenance
- Sought after area to live in
- 4 significantly sized bedrooms, all with built-in wardrobes & main with en-suite
- Double lock up garage
- Air conditioned and ceiling fans throughout
- Large 695sqm fully fenced block

Call Adrian to inspect today before you miss this opportunity.

**4 BED | 2 BATH | 2 CAR**

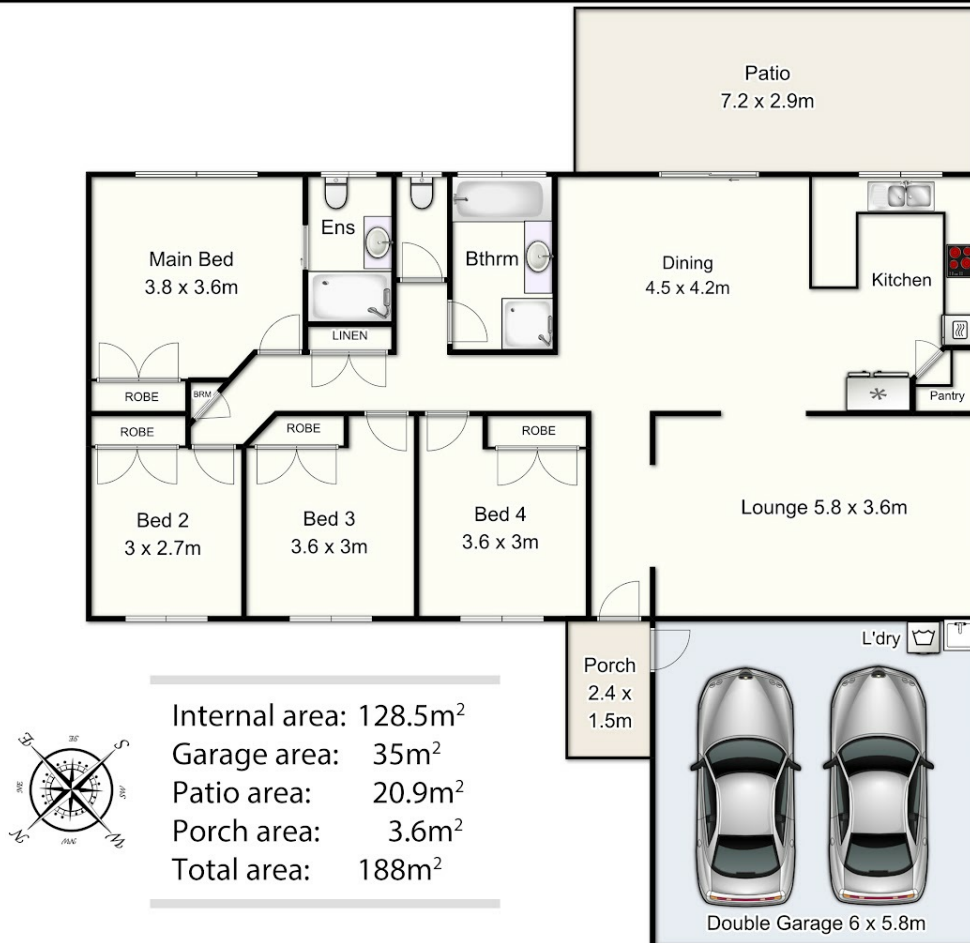
**PRICE:**  
**\$430,000**

**OPEN FOR INSPECTION:**  
**N/A**



**Adrian Matthews**  
**0403171644**  
adrianmatthews@atrealty.com.au  
[www.atrealty.com.au](http://www.atrealty.com.au)

# 26 Dougy Place, Bellbowrie



Whilst every attempt has been made to ensure the accuracy of the floor plan contained here, measurements of doors, windows, rooms and any other items are approximate and no responsibility is taken for any error, omission, or mis-statement. This plan is for illustrative purposes only and should be used as such by any prospective buyer. Created by [www.highshots.com](http://www.highshots.com).

Disclaimer: Please note this floor plan is for marketing purposes and is to be used as a guide only. All dimensions are estimates only and may not be exact measurements.