



FOR SALE

ANOTHER ONE UNDER CONTRACT BY SARAH SCHULTZ OF SCHULTZ REALTY.

- 4 King size bedrooms, Main with Massive walk in robe + Large study
- 2 Very large bathrooms (Main ensuite very large with spa bath)
- 2 Car garage + 3 car drive way

THIS is one time not to judge a book by its cover. This really is an amazing home and a must see !!

This lovely home has a great sized living area with a built in bar and bi-fold doors opening up to the entertainment area. A separate dining area and second living area or rumpus, also both include bi-fold doors to the outside entertainment area.

The large galley style kitchen has masses of storage, a large gas stove, dishwasher and granite bench tops.

A charming king size main bedroom includes a walk-in robe plus renovated ensuite with lots of storage and a large corner spa. Making it perfect for a relaxing night in after a hard days work. Completing the downstairs area is a large front room/office with built in desks and storage shelves plus a powder room and good size separate laundry.

Upstairs consists of 3 more king size bedroom's, another very large renovated bathroom and a separate toilet/powder room.

This home has so much character and is made of Hebel which is a material with a unique content structure that keeps the temperature at 24 degrees all year round. No need for air conditioners and along with the 5kw solar electricity system and gas hot water, there will be huge savings to your power bills.

The large outdoor entertaining area overlooking a good size yard for the kids to play, double garage and 3 car driveway finishes off this complete charming home.

4 BED | 2 BATH | 2 CAR

PRICE:

OFFERS ABOVE \$599,000

OPEN FOR INSPECTION:

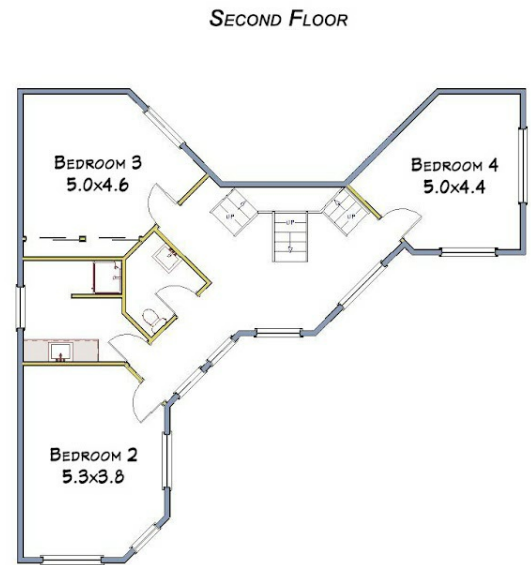
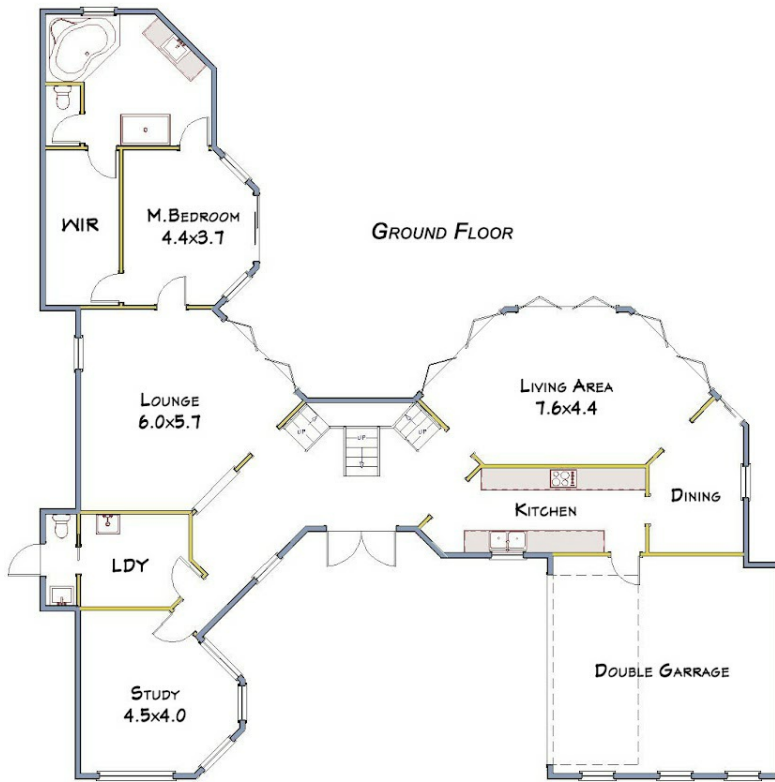
N/A



Sarah Schultz

schultz@atrealty.com.au

www.atrealty.com.au



ALL MEASUREMENTS SHOWN OR IMPLIED ARE APPROXIMATE AND NO RESPONSIBILITY IS TAKEN FOR ANY ERROR, OR OMISSION, NOR IS ANY WARRANTY GIVEN.
THESE PLANS ARE FOR ILLUSTRATIVE PURPOSES ONLY AND SHOULD BE USED SUCH. COPYRIGHT 2015. ALL RIGHTS RESERVED BY AbstractView.com.au

Disclaimer: Please note this floor plan is for marketing purposes and is to be used as a guide only. All dimensions are estimates only and may not be exact measurements.