



**SOLD**

## SPLIT LEVEL HOME ON A LARGE BLOCK

Perched on an elevated 816sqm block, this well presented family home features a recently renovated tiled open plan kitchen & dining/living room with an insulated pergola & fenced outdoor living area off to the side.

Bedrooms which are carpeted & have built in wardrobes. The Large Master Bedroom is air conditioned & has an en-suite.

The rear yard is split level, landscaped & fenced with a brick BBQ & has views.

### Features:

- \* Detached 2 Car remote Garage
- \* Separate Laundry
- \* Separate Toilet
- \* Bath in main bathroom
- \* Security screens on all windows
- \* 816sqm block
- \* Pine Lake and park, Schools, The Pines Shopping Centre & Beach are all close by
- \* Bus Stop directly opposite

Current rental return \$530per week lawn mowing is included in the rent. Tenants pay for water usage. The current tenants are on a fixed term lease agreement until 15/6/17.

Contact Justin Haynes on 0404 713 845 to arrange an inspection.

Profile: <https://www.atrealty.com.au/justinhaynes/>

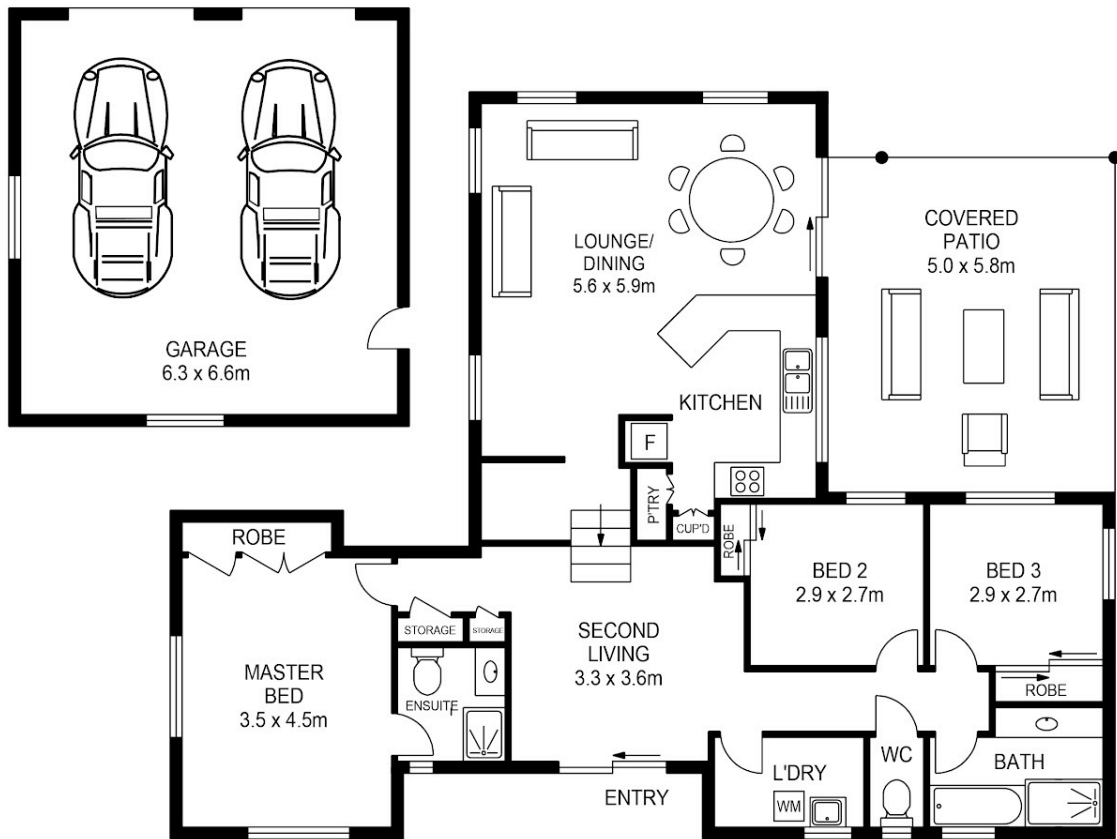
**3 BED | 2 BATH | 0 CAR**

**PRICE:**  
\$550,000

**OPEN FOR INSPECTION:**  
N/A



**Justin Haynes**  
**0404713845**  
justinhaynes@atrealty.com.au  
[www.atrealty.com.au](http://www.atrealty.com.au)



Scale in metres. Indicative only. Dimensions are approximate. All information contained herein is gathered from sources we believe to be reliable. However we cannot guarantee its accuracy and interested persons should rely on their own enquiries.

INTERNAL : 112 SQ.M.  
 GARAGE : 41 SQ.M.  
 PATIO : 27 SQ.M.



114 Murtha Drive, Elanora



Disclaimer: Please note this floor plan is for marketing purposes and is to be used as a guide only. All dimensions are estimates only and may not be exact measurements.

Justin Haynes  
 0404713845  
 justinhaynes@atrealty.com.au  
 www.atrealty.com.au

