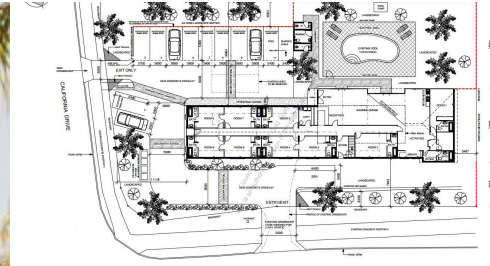


28 MICHIGAN DRIVE OXFENFORD



FOR SALE

DEVELOPMENT OPPORTUNITY- WITH COUNCIL APPROVAL , IDEAL FOR SPECIALIST CENTRE, GYMNASIUM, CHILDCARE

This near level site with two street frontages is located just within walking distance to theme parks Warner Bros. Movie World, Wet'n'Wild Water World and Australian Outback Spectacular.

The site is app. 1/2 acre (1957M) with two street frontages

The main street frontage is over 50m long and has a very good traffic flow

With city council approval the potential uses include:

Service station

Child care centre

Medical centre

Townhouse/ unit development

Free lot subdivision

The current DA approval from Gold Coast City Council is for a motel with

9 guest rooms/additional room or caretaker's quarters and 11 car parks

The DA is available on request.

The building needs some work and alterations, car parks etc to comply with the requirements of the DA.

There is an in ground swimming pool .

The property is situated just across from the Oxenford medical centre with chemist and other speciality shops a few minutes drive from the Oxenford Business Hub, M1 motor way, Dreamworld and only 12- 15 drive to the beautiful gold coast beaches.

Please call Godfrey on 0401 887 386 or Niluka on 0406 032 717 for a friendly discussion and to obtain a copy of the DA.

Disclaimer: The information provided to the recipient is to assist the recipient and the professional advisors to decide whether to proceed to acquire an interest in the subject property. The discloser does not make or give an express or implied guarantee, representation or warranty regarding i) the accuracy or completeness of the information or ii) whether reasonable care has been or will be taken in compiling, preparing and furnishing the information.

5 BED | 4 BATH | 2 CAR

PRICE:

PRICE BY NEGOTIATION

OPEN FOR INSPECTION:

N/A



Godfrey & Niluka Warusevitane

0401887386

godfrey@atrealty.com.au

www.atrealty.com.au