

FOR SALE

QUALITY 3 BEDROOM LIVING WITH OUT COMPROMISE

Inspection is a must for this exceptional and convenient split level town residence, offers a high quality low maintenance lifestyle for the family home buyer, downsizer or investor who wants a convenient and quiet location.

Spacious master bedroom with full ensuite and walk in robe,
Spacious lounge / theater room,

The lower level features 2 bedrooms with built in robes.

Open plan living with a fully featured kitchen quality appliances, gas cooking, Island bench, timber floors and loads of storage. Generous living area that opens on to a sun drenched deck and secluded courtyard, Featuring a Roll out Awning, Merbau timber decking and 4-person spa – perfect for alfresco living & entertaining plus a yard with lush lawn large enough to play Cricket on but small enough to leave your weekends free, Walking distance to Shops, Schools, transport and reserves,

There is nothing to do but move in and enjoy.

- Miele kitchen appliances
- Quality carpets
- Separate lounge room
- Central heating
- Double garage with remote control door
- A remote controlled security gate
- Roller blinds
- Awning blinds
- Central heating
- Ducted cooling

3 BED | 2 BATH | 0 CAR

PRICE:

Contact Wayne on 0424 370 940

OPEN FOR INSPECTION:

N/A

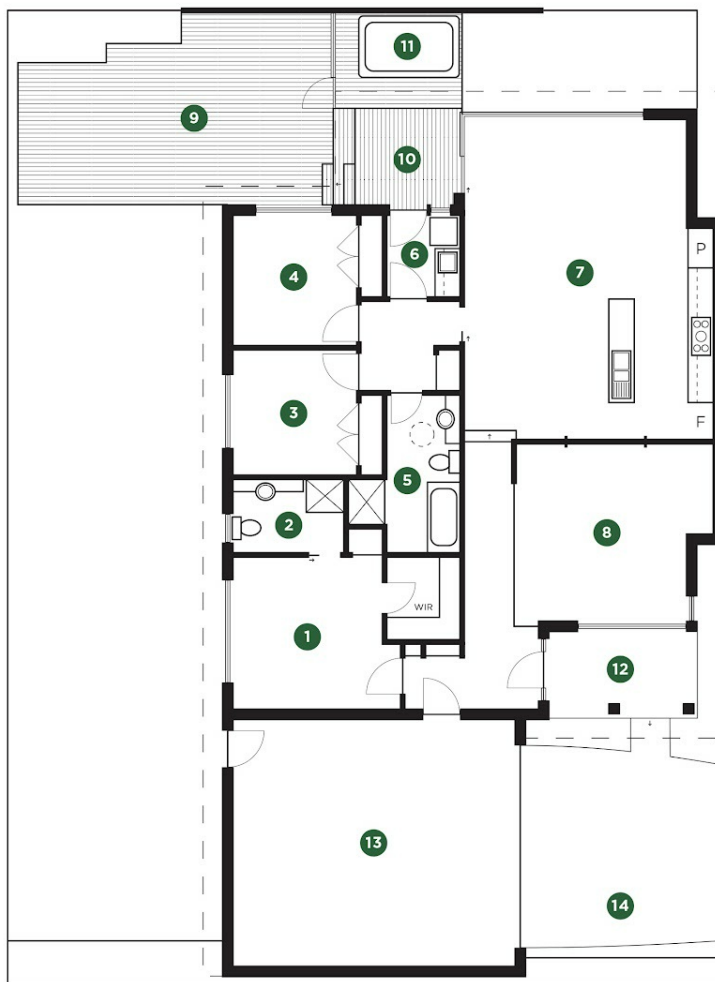


Wayne Hutchinson

0424370940

wayne@waynehutchinson.com.au

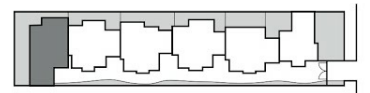
waynehutchinson.com.au



6/357 Maroondah Highway CROYDON NORTH

House Area 190m²
Total Property Area 351m²

1. Master Bedroom	3900 x 3400mm
2. Ensuite	2600 x 1800mm
3. Bed 2	3000 x 3000mm
4. Bed 3	3000 x 3000mm
5. Bathroom	1700 x 3400mm
6. Laundry	1700 x 1900mm
7. Living / Kitchen	5200 x 7500mm
8. Lounge	5200 x 4200mm
9. Deck	7700 x 4500mm
10. Verandah	2400 x 2200mm
11. Spa	2800 x 2200mm
12. Porch	3500 x 2000mm
13. Garage	6600 x 5800mm
14. Car Space	



0 1 2 3 4 5 6 7m

Disclaimer: Please note this floor plan is for marketing purposes and is to be used as a guide only. All dimensions are estimates only and may not be exact measurements.