



## FOR SALE

### THE HOUSE WITH THE LARGE LAND AND ENDLESS IDEAS

This high set home offers you the convenience of Chermside, but the quiet of Geebung. Westfield and Chermside CBD are both within a short walk through the ever beautiful Marchant and 7th Brigade parklands that surround the property.

Pulling into the drive way, the property features both lock up garages and carport options, allowing your weekend toys to be locked away, with side access given to the shed for even more storage and work space options.

The property has 3 good size bedrooms, a large L shaped living space opening up to a front sun room. The property features beautiful hardwood floors throughout.

The back of the house is for the entertainer with a large verandah expanding out over the backyard, and the weatherboard exterior gives it that Queensland feel.

Downstairs has been built in, giving you more options and space to utilise as you need, including a second shower, toilet, rumpus and 2 additional rooms for that home office, creative space or further storage.

With a price point and position hard to beat in Geebung, and the convenience of all the Northern Suburb assets, this property is well worth viewing for people wanting more.

#### Features:

- 3 Bedroom.
- 2 Lock up garage
- 3 carport
- 1 shed
- 2 bathroom
- 678m2 block
- A back entertaining deck.

3 BED | 2 BATH | 5 CAR

#### PRICE:

Offers in the high \$500,000's

#### OPEN FOR INSPECTION:

N/A

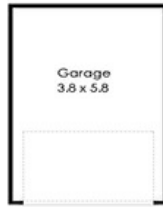


**Gayle Twigg**

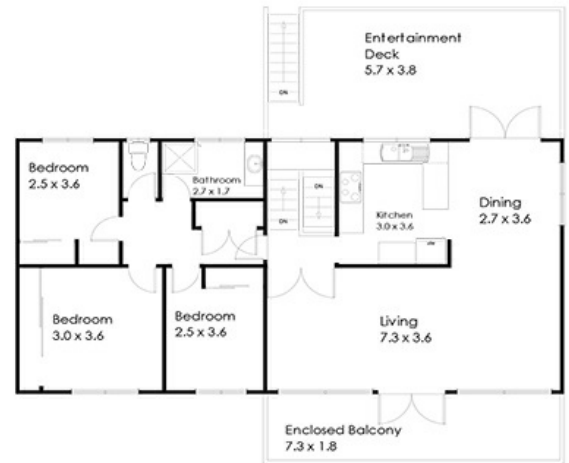
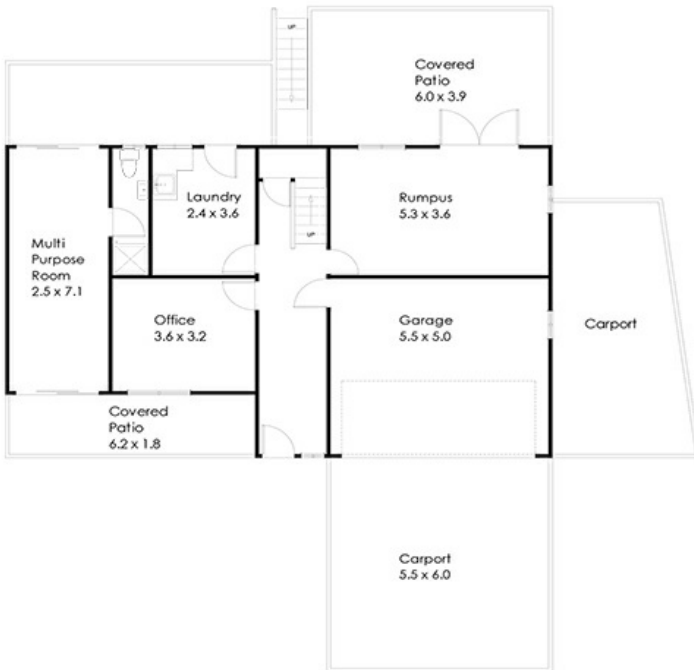
**0418746497**

gayle@atrealty.com.au

[www.atrealty.com.au](http://www.atrealty.com.au)



Whilst every attempt has been made to ensure the accuracy of the floor plan contained here, measurements of doors, windows rooms and any other items and structures are approximate and no responsibility is taken for any error, omission or mis-statement. Bathroom and kitchen fittings, cupboards and door types and laundry appliances and windows are taken and approximate the actual fitting installed. This plan is for illustrative purposes and should be used as such by any prospective buyer. Plan drawn by Eagle Eye Photography. Copyright 2016. All rights reserved.



11 Willcott Street Geebung 4034

@realty

Disclaimer: Please note this floor plan is for marketing purposes and is to be used as a guide only. All dimensions are estimates only and may not be exact measurements.