

# FOR SALE

## PERFECT ON PALM

I am very proud to present this thoroughly maintained cute little Queensland cottage because I know it is going to make someone very very happy indeed.

First home buyers, savvy investors and even land buyers will be competing for this one.

You will fall in love with this property the moment you step inside.

This property really does have all the options - Buy and hold, renovate, extend, lift and build under, do nothing or even demolish to build the house of your dreams.

Additional features include:

- \* Polished floorboards, VJ walls and high ceilings
- \* Fully Fenced, landscaped yard
- \* Spacious under-house storage areas with undercover parking
- \* 2 generously sized bedrooms
- \* Large 523sqm block
- \* Quick and easy access to the Pacific Motorway
- \* Just 7.5 km's to the city (9km's or 13 minutes by road with no traffic)
- \* Quiet street
- \* In the much desired school catchment of Holland Park SHS

With charming street appeal, large land size, classic character and so many options, this perfectly comfortable, adorable little Queenslander will go very quickly so view it while you can.

2 BED | 1 BATH | 0 CAR

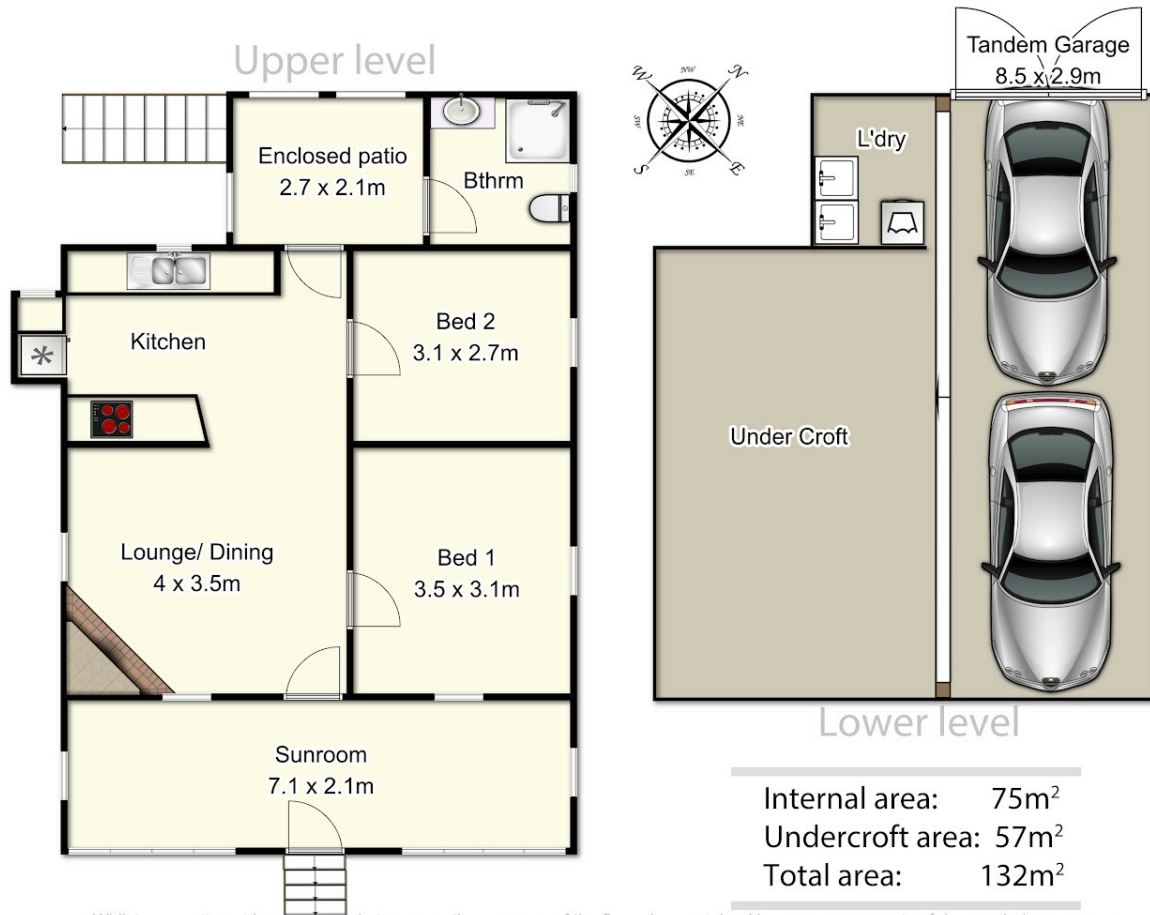
PRICE:  
For Sale

OPEN FOR INSPECTION:  
N/A



**Adrian Matthews**  
**0403171644**  
adrianmatthews@atrealty.com.au  
[www.atrealty.com.au](http://www.atrealty.com.au)

## 5 Palm Ave, Holland Park West



Disclaimer: Please note this floor plan is for marketing purposes and is to be used as a guide only. All dimensions are estimates only and may not be exact measurements.