

3/95 PEACHESTER RD **BEERWAH**



FOR SALE

UNDER CONTRACT

Easy Care Brand New Home backing onto over 1 acre of Council Parklands. Low maintenance yard, 3 bedroom, master with ensuite, open plan living with air con and alfresco deck. Ceiling fans, quality appliances, double lock up garage.

Brand New House & Land package in Beerwah - Full Turnkey Inclusions.

Millbrook is a master planned residential community consisting of 48 individual, luxury freehold homes with community facilities including pool, outdoor dining facilities and landscaped gardens.

- We provide the "the land, the home, the lifestyle"
- The land is your own freehold lot in a secure setting in the heart of Beerwah
- The home is your own quality, freestanding home 'turnkey' ready
- The lifestyle is low maintenance hinterland living within a stroll of urban facilities
- No need to find the land, hire an architect and contract a builder. It's all been done for you!

- Luxury bespoke 'turnkey' designer houses from award winning house builder Ausmar Homes
- 3 Bedrooms /2 Bathrooms /Double Garage
- High Ceilings /Alfresco Dining
- High quality fixtures and finishes
- Landscaping, fencing and driveways

COMMUNITY

- Freehold house and land under an affordable body corporate to ensure quality and security of development maintained
- Full size pool complete with outdoor BBQ and dining facilities
- Off street visitor car parking and bicycle storage
- Landscape gardens and common areas

Now is the time to contact us about securing your new home at "Millbrook" and register your interest to receive regular progress reports.

The Display Office is situated in the main street of Beerwah (Shop 12/60 Simpson) between Neddys Nose Bag Cafe and Toothkind Dentist. We look forward to seeing you and welcome all enquiries.

3 BED | 2 BATH | 0 CAR

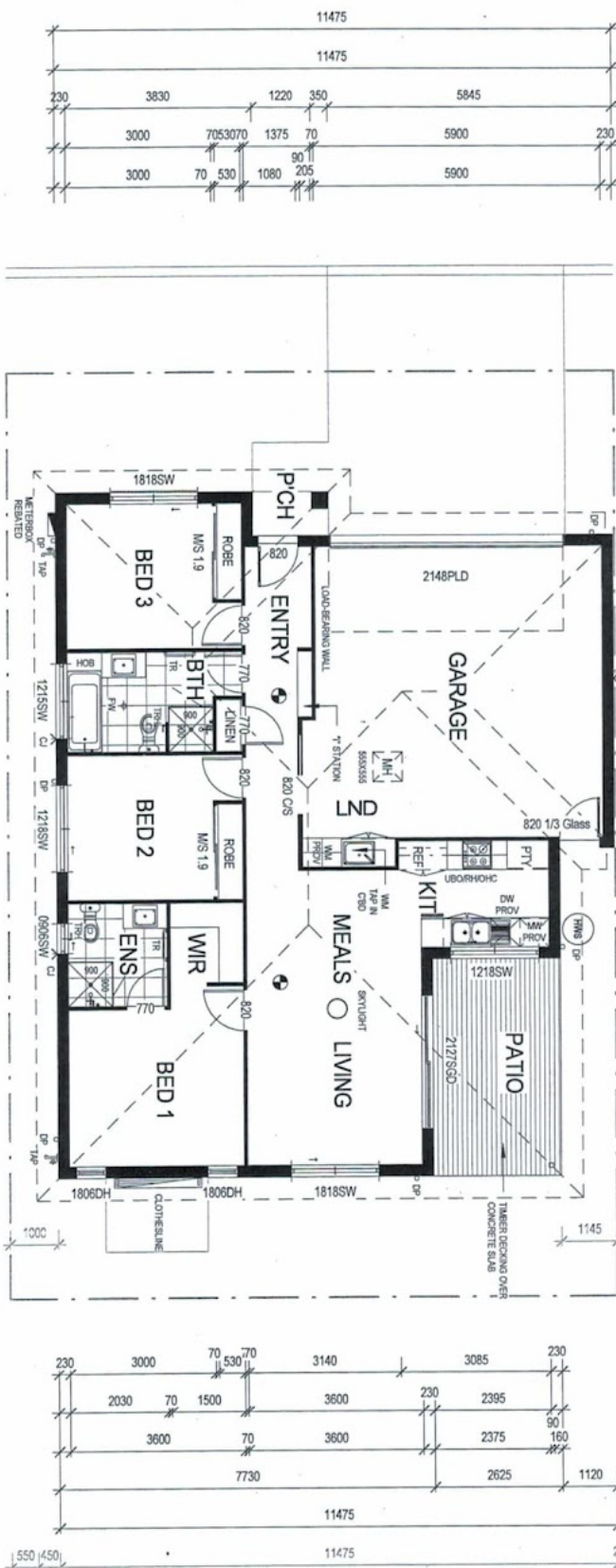
PRICE:
\$405,000

OPEN FOR INSPECTION:
N/A



Suzie Smith
0400880932
suzie@atrealty.com.au
www.atrealty.com.au

Type 1



FLOOR
House
Porch
Patio
Grand total

Disclaimer: Please note this floor plan is for marketing purposes and is to be used as a guide only. All dimensions are estimates only and may not be exact measurements.