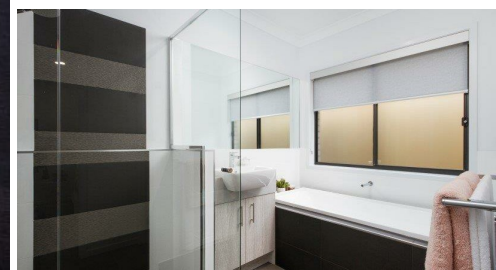


38/95 PEACHESTER RD, BEERWAH, QLD, 4519



SOLD

LOT 38 - UNDER CONTRACT

238sqm land - 3 Bedroom, master with ensuite and walk in robe. Open plan living flowing onto decked north facing alfresco. High ceilings, modern kitchen and appliances. Huge double lock up garage and main bathroom with shower and bath.

Brand New House & Land package in Beerwah - Full Turnkey Inclusions.

Millbrook is a master planned residential community consisting of 48 individual, luxury freehold homes with community facilities including pool, outdoor dining facilities and landscaped gardens.

- We provide the "the land, the home, the lifestyle"
- The land is your own freehold lot in a secure setting in the heart of Beerwah
- The home is your own quality, freestanding home 'turnkey' ready
- The lifestyle is low maintenance hinterland living within a stroll of urban facilities
- No need to find the land, hire an architect and contract a builder. It's all been done for you!

- Luxury bespoke 'turnkey' designer houses from award winning house builder Ausmar Homes
- 3 Bedrooms /2 Bathrooms /Double Garage
- High Ceilings /Alfresco Dining
- High quality fixtures and finishes
- Landscaping, fencing and driveways

COMMUNITY

- Freehold house and land under an affordable body corporate to ensure quality and security of development maintained
- Full size pool complete with outdoor BBQ and dining facilities
- Off street visitor car parking and bicycle storage
- Landscape gardens and common areas

Now is the time to contact us about securing your new home at "Millbrook" and register your interest to receive regular progress reports.

The Display Office is situated in the main street of Beerwah (Shop 12/60 Simpson) between Neddys Nose Bag Cafe and Toothkind Dentist. We look forward to seeing you and welcome all enquiries.

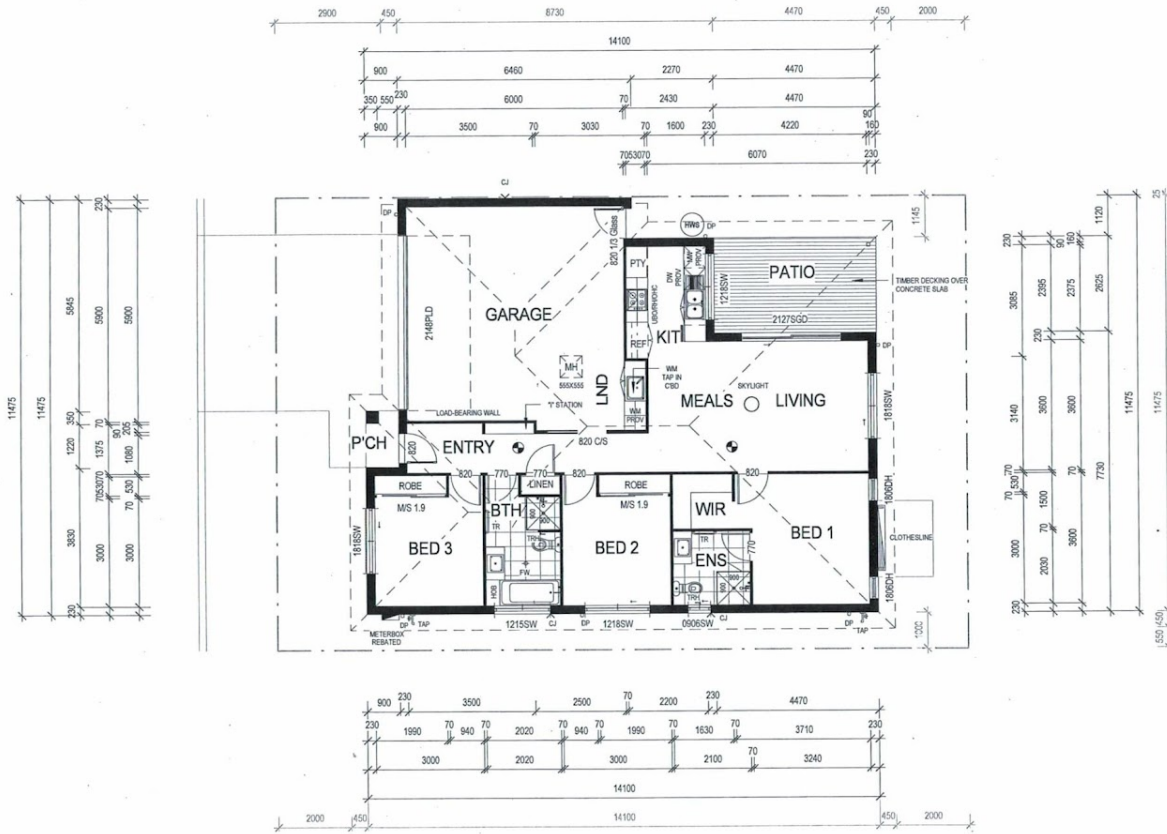
3 BED | 2 BATH | 0 CAR

PRICE:
\$385,000

OPEN FOR INSPECTION:
N/A



Suzie Smith
0400880932
suzie@atrealty.com.au
www.atrealty.com.au



Disclaimer: Please note this floor plan is for marketing purposes and is to be used as a guide only. All dimensions are estimates only and may not be exact measurements.