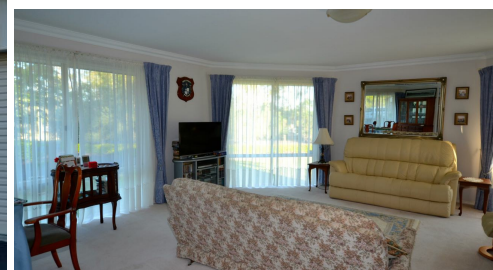


35 LAKEVIEW DRIVE, ESK, QLD, 4312



SOLD

PRICED TO SELL BEAUTIFUL BRICK HOME ON 2AC

- * Master Built Brick Home
- * Designed for easy living
- * Central Kitchen with views to the Gardens
- * Large Picture Windows are the feature of the Lounge Room
- * Master Bedroom with Walk In Robe and Ensuite
- * Double Lock up Garage with remote door opener
- * Single Lock up Garage for the boat / camper
- * Established Gardens with Bitumen Driveway
- * 4 x 5,000 gal Water Tanks
- * Solar Panels 1.5kw + Solar HWS - 400ltrs
- * Vegi Patch and Olive Grove

3 BED | 2 BATH | 0 CAR

PRICE:
\$365,000

OPEN FOR INSPECTION:
N/A



Lyn Sills
0402500825
lynsills@atrealty.com.au
eskrealestate.com.au