



SOLD

EXCEEDING EXPECTATIONS AND BEYOND IMAGINATION!

You know you have arrived somewhere special once you step into the foyer of 14 Bellavista Close and are instantly embraced with magnificent panoramic views of the Gold Coast.

You will be mesmerised by the stunning 180-degree ever-changing view both day and night from one of the many east facing decks or balconies. Situated in one of Highland Park's most prestigious streets, architecturally designed residence is on an elevated position in a quiet cul-de-sac.

This multi-level home offers you many lifestyle options. Currently set up as four bedrooms, two living, a games room, gym plus an office. This is a showpiece of contemporary living.

The stunning designer kitchen with stone bench tops extends out to the casual dining area. From here this space embraces entertainment decks to enjoy seamless indoor outdoor living. The elegant sunken lounge has the added drama of floor to ceiling glass defining a separate space without using walls yet is still intimate and gives uninterrupted sweeping views of the Gold Coast skyline. The built-in bar makes for easy entertaining both casual and formal or just a fun night in.

Three of the bedrooms are located on the upper level making it ideal for family life. The fourth bedroom on the entry level has a small courtyard and currently used as a home office. The master retreat has a private balcony and luxurious spa bath ensuite. Full glass walls make this a beautiful space to take in the vista and just relax. The second bedroom has been set up especially for guests who can enjoy personal time on their own balcony.

A feature of this home is the fully self-contained accommodation with separate entrance on the lower level, making it ideal as an Airbnb or granny flat. The media room could be used as a fifth bedroom and there is a lounge, and pool table that stays with the property, a wet bar, kitchen and workout gym area.

The expansive outdoor entertainment area with a resort style pool and eight-person spa is the ultimate in lifestyle living. At night, this space takes on a whole new dimension with the twinkling views of the Gold Coast as your backdrop.

5 BED | 3 BATH | 0 CAR

PRICE:
\$855,000

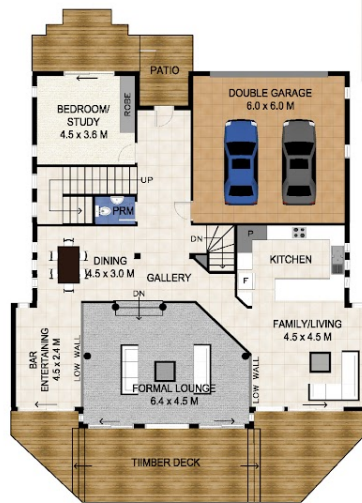
OPEN FOR INSPECTION:
N/A



Gaylia Griffiths
0419879037
gayliagriffiths@atrealty.com.au
www.atrealty.com.au



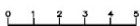
LOWER LEVEL



GROUND LEVEL



UPPER LEVEL



Scale in metres. Indicative only. Dimensions are approximate. All information contained herein is gathered from sources we believe to be reliable. However we cannot guarantee its accuracy and interested persons should rely on their own enquiries.

LOWER	: 128 SQ.M.
GROUND	: 185 SQ.M.
UPPER	: 108 SQ.M.
LOWER EXT.	: 311 SQ.M.
TIMBER DECK	: 55 SQ.M.
BALCONY	: 16 SQ.M.



14 Bellavista Close, Highland Park



Disclaimer: Please note this floor plan is for marketing purposes and is to be used as a guide only. All dimensions are estimates only and may not be exact measurements.