



FOR SALE

QUALITY FAMILY DESIGN FOR LIFESTYLE HARMONY

Discover the secret of successful family design with this superb single level residence, where formal and informal living zones act in harmony to create a comforting environment where the family can live and entertain in unison. Spanning out from a central kitchen showcasing stainless steel appliances, an LG dishwasher and island breakfast bench, the home embraces a gorgeous lounge and dining room to one side with a fabulous family room to the other. Sliding doors extend out from the kitchen to reveal a splendid alfresco entertaining zone, while the backyard encourages children out to play amongst the productive fruit trees. A separate sitting room doubles as a study for those working from home or with teenage children requiring a homework space. With the three robed bedrooms delivering excellent accommodation for the growing family; two with step-in-robos, lavish master suite with walk-in-robe and ensuite, supplemented by a family bathroom, separate toilet and laundry. Fully equipped with ducted heating, evaporative cooling, and garden shed plus a double garage with internal access. In a highly sought after family neighbourhood, close to Oxley Christian College, Chirnside Park Primary, Chirnside Park Shopping Centre, buses and parkland. Photo ID required at all open for inspections.

3 BED | 2 BATH | 0 CAR

PRICE:

AUCTION Saturday 11th March at 11am On S

OPEN FOR INSPECTION:

N/A



Adrian Chalmers

0431402112

adrian.chalmers@atrealty.com.au

www.atrealty.com.au

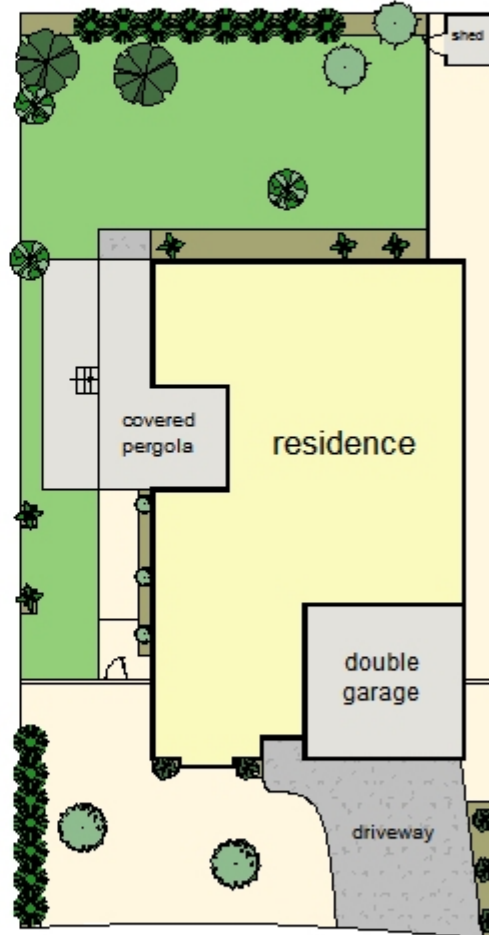
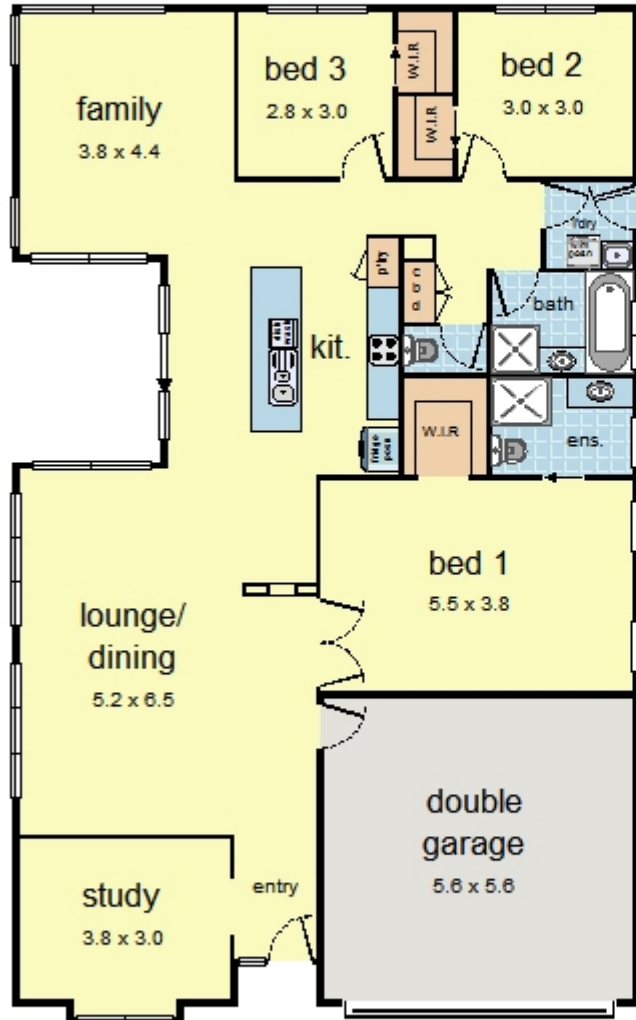


0 1 2 3 4

approx. scale (m)

This plan is a sketch, and all data shown is general only.

NB: All stated dimensions are approximate only & should not be taken as definite.



73 Regency Rise, Chirnside Park

Disclaimer: Please note this floor plan is for marketing purposes and is to be used as a guide only. All dimensions are estimates only and may not be exact measurements.